

PLAN A6 2Plus Br+2.5Bath+Den+Roof-Deck

TOTAL AREA **Townhome**

1599 SQ FT

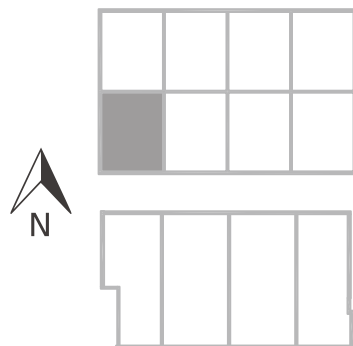
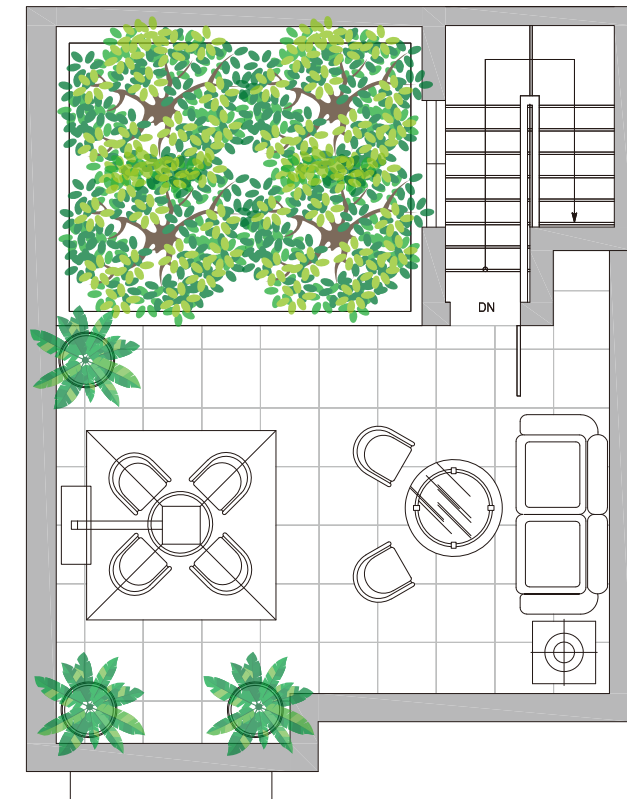
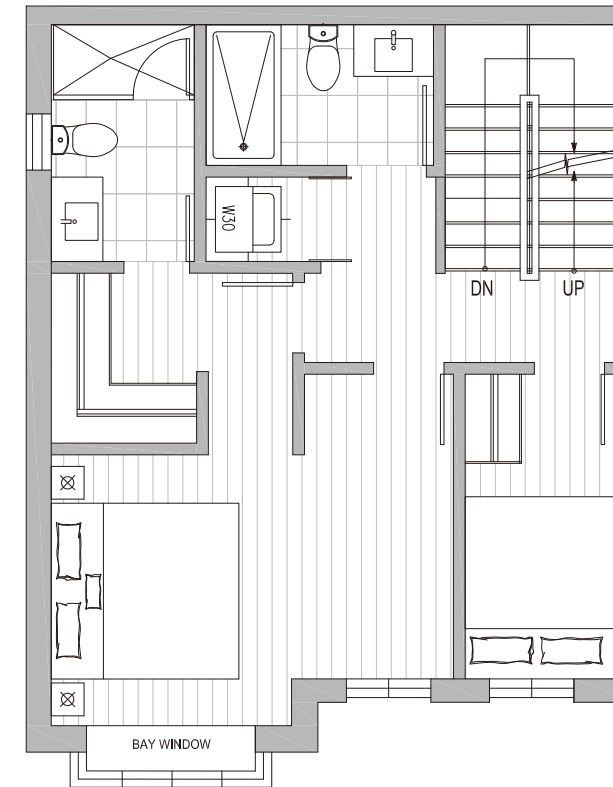
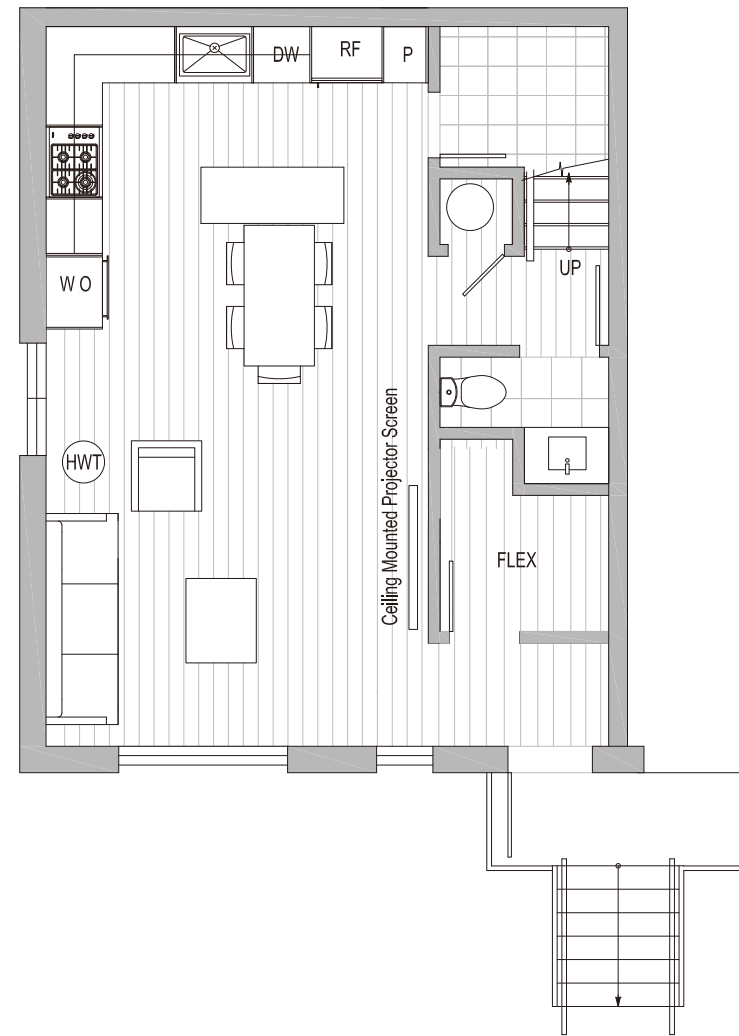
LIVING AREA OUTDOOR SPACE

1183 SQ FT **416** SQ FT

Actual suite plan may have minor variations from or be shown as an mirror image of the typical plan shown.

Features:

- 1** Corner unit offers side window for extra view & ventilation.
- 2** The south-facing floor to ceiling window from living room provides beautifully landscaped courtyard view with bright sun light.
- 3** L-shaped open plan kitchen with more storage space is the hallmark of modern homes.
- 4** The master bedroom features enormous-size space.
- 5** Extra master bedroom's square footage can easily accomodate aBaby's crib, or be converted into a third bedroom at your option.
- 6** The second bedroom is able to be designed as build-in nursery to meet the family with kids in demand.
- 7** Roof top garden as additional usable space is your valuable private amenity.



DISCLAIMER:

IN A CONTINUING EFFORT TO MEET THE CHALLENGE OF PRODUCT IMPROVEMENTS, THE DEVELOPER RESERVES THE RIGHT TO MODIFY OR CHANGE PLANS, SPECIFICATIONS, AND FEATURES WITHOUT NOTICE. FLOORPLANS, ELEVATIONS, ROOM SIZES, DECKS, AND SQUARE FOOTAGES ARE APPROXIMATE AND MAY VARY FROM THE ACTUAL BUILT HOME. FLOORPLANS MAY BE ORIENTED DIFFERENTLY THAN DISPLAYED, FURNITURE AND DECOR ITEMS ARE SHOWN AS AN EXAMPLE ONLY AND ARE NOT INCLUDED. REFER TO THE DISCLOSURE STATEMENT FOR SPECIFIC DETAILS. THIS IS NOT AN OFFERING FOR SALE. ANY SUCH OFFERING CAN ONLY BE MADE WITH THE APPLICABLE DISCLOSURE STATEMENT AND AGREEMENT OF PURCHASE AND SALES AND MARKETING BY NU STREAM REALTY INC. WWW.LAUREL32.COM E.&O.E.

PLAN A7 2Plus Br+2.5Bath+Den+Roof-Deck

TOTAL AREA **Townhome**

1572 SQ FT

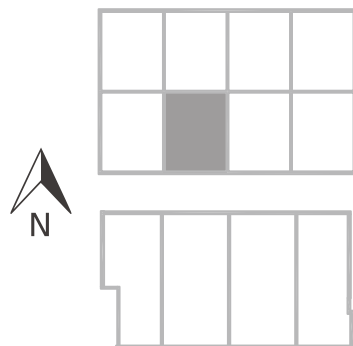
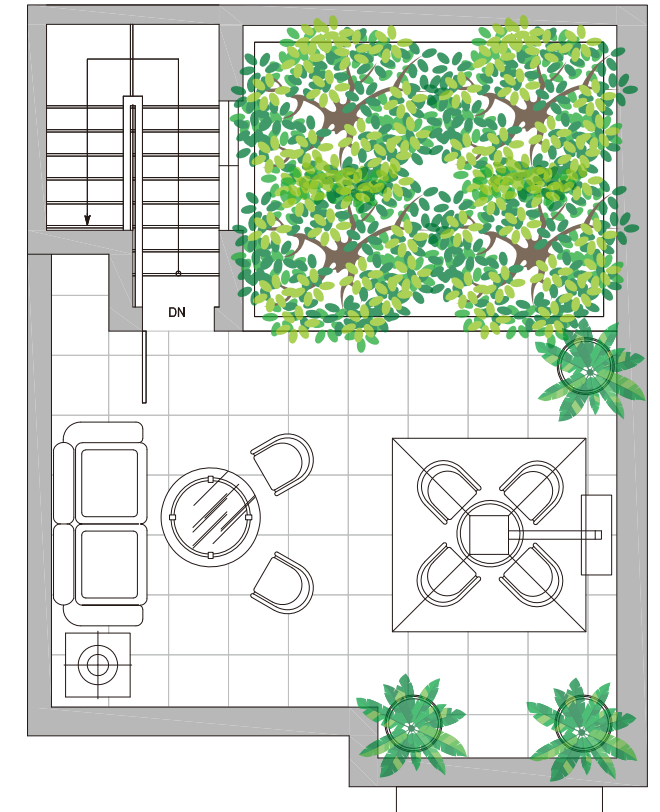
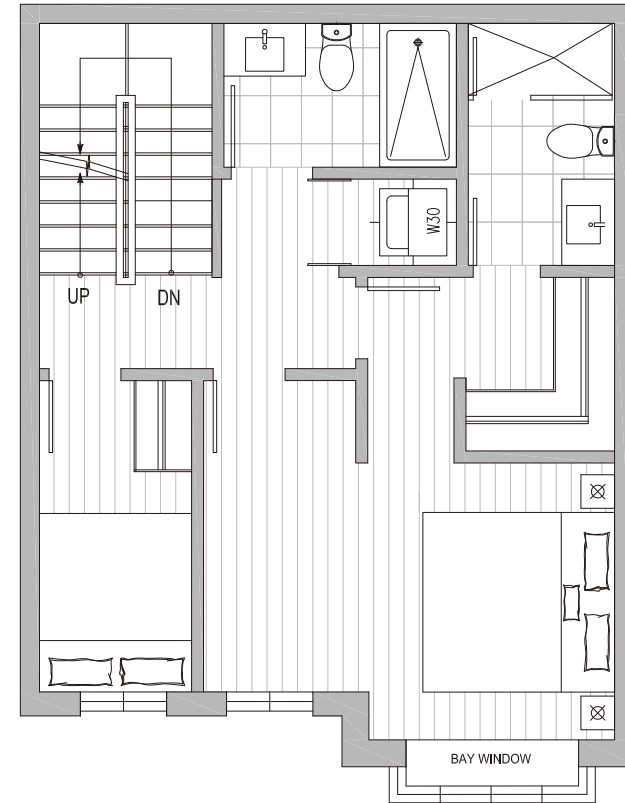
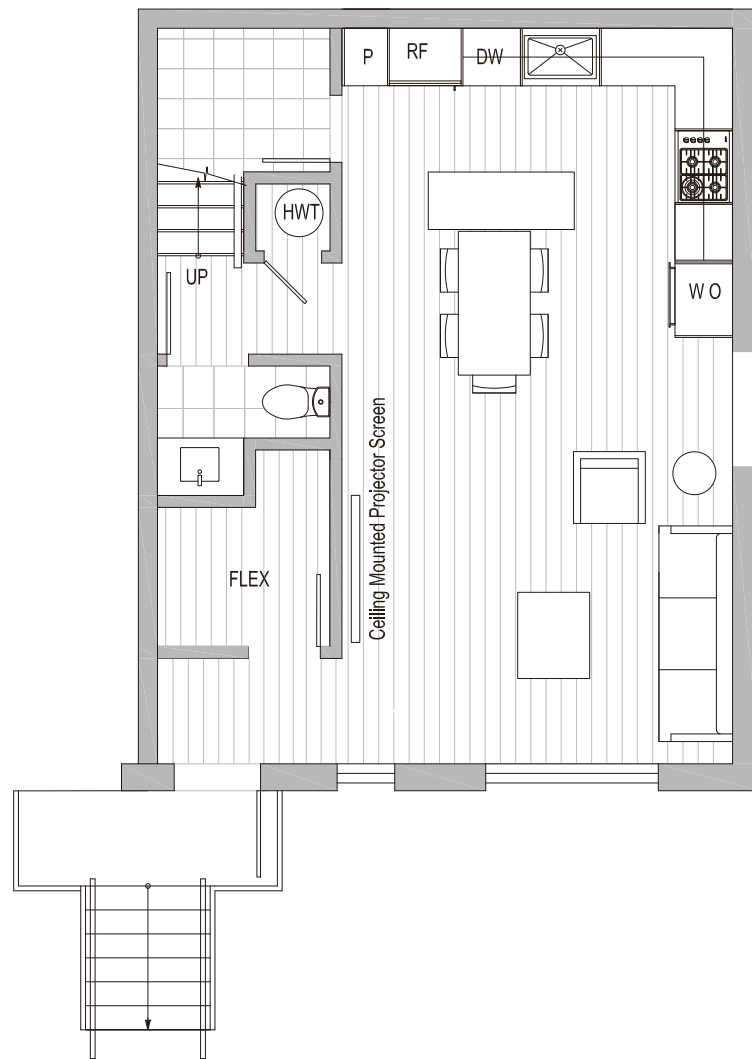
LIVING AREA OUTDOOR SPACE

1156 SQ FT **416** SQ FT

Actual suite plan may have minor variations from or be shown as an mirror image of the typical plan shown.

Features:

- 1** Living room with more expansive and sophisticated concept
- 2** The south-facing floor to ceiling window from living room provides beautifully landscaped courtyard view with bright sun light.
- 3** L-shaped open plan kitchen with more storage space is the hallmark of modern homes.
- 4** The master bedroom features enormous-size space.
- 5** Extra master bedroom's square footage can easily accomodate a Baby's crib, or be converted into a third bedroom at your option.
- 6** The second bedroom is able to be designed as build-in nursery to meet the family with kids in demand.
- 7** Roof top garden as additional usable space is your valuable private amenity.



DISCLAIMER:

IN A CONTINUING EFFORT TO MEET THE CHALLENGE OF PRODUCT IMPROVEMENTS, THE DEVELOPER RESERVES THE RIGHT TO MODIFY OR CHANGE PLANS, SPECIFICATIONS, AND FEATURES WITHOUT NOTICE. FLOORPLANS, ELEVATIONS, ROOM SIZES, DECKS, AND SQUARE FOOTAGES ARE APPROXIMATE AND MAY VARY FROM THE ACTUAL BUILT HOME. FLOORPLANS MAY BE ORIENTED DIFFERENTLY THAN DISPLAYED, FURNITURE AND DECOR ITEMS ARE SHOWN AS AN EXAMPLE ONLY AND ARE NOT INCLUDED. REFER TO THE DISCLOSURE STATEMENT FOR SPECIFIC DETAILS. THIS IS NOT AN OFFERING FOR SALE. ANY SUCH OFFERING CAN ONLY BE MADE WITH THE APPLICABLE DISCLOSURE STATEMENT AND AGREEMENT OF PURCHASE AND SALES AND MARKETING BY NU STREAM REALTY INC. WWW.LAUREL32.COM E.&O.E.



LAUREL32

PLAN A8 2Plus Br+2.5Bath+Den+Roof-Deck

Townhome

TOTAL AREA

1572 SQ FT

LIVING AREA

1156 SQ FT

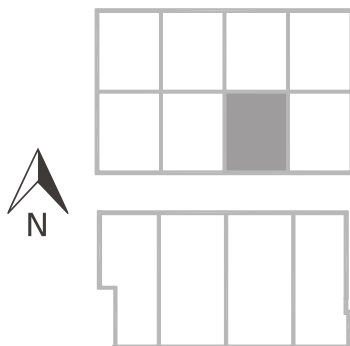
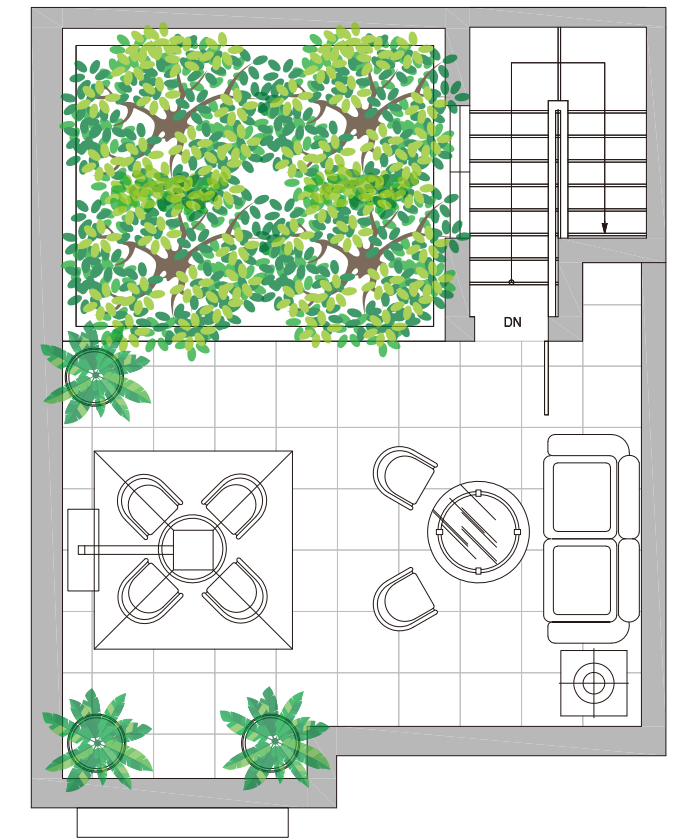
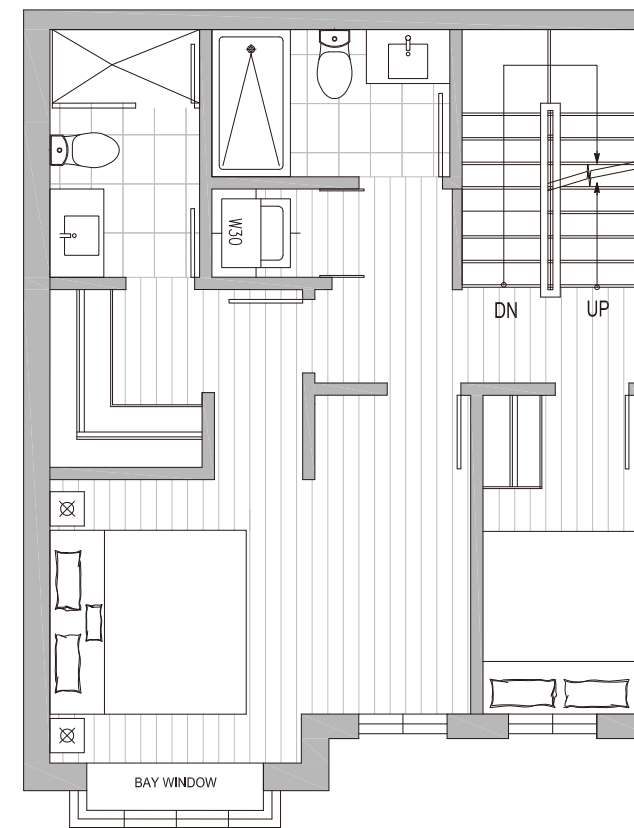
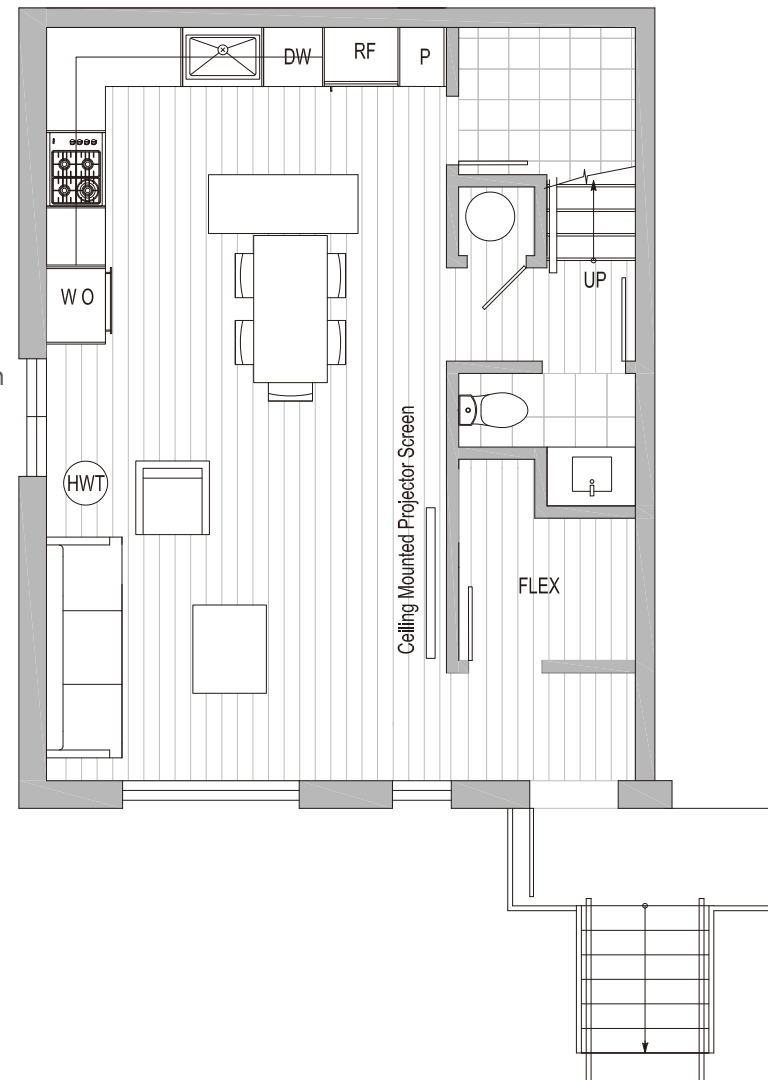
OUTDOOR SPACE

416 SQ FT

Actual suite plan may have minor variations from or be shown as an mirror image of the typical plan shown.

Features:

- 1** Living room with more expansive and sophisticated concept
- 2** The south-facing floor to ceiling window from living room provides beautifully landscaped courtyard view with bright sun light.
- 3** L-shaped open plan kitchen with more storage space is the hallmark of modern homes.
- 4** The master bedroom features enormous-size space.
- 5** Extra master bedroom's square footage can easily accomodate a Baby's crib, or be converted into a third bedroom at your option.
- 6** The second bedroom is able to be designed as build-in nursery to meet the family with kids in demand.
- 7** Roof top garden as additional usable space is your valuable private amenity.



DISCLAIMER:

IN A CONTINUING EFFORT TO MEET THE CHALLENGE OF PRODUCT IMPROVEMENTS, THE DEVELOPER RESERVES THE RIGHT TO MODIFY OR CHANGE PLANS, SPECIFICATIONS, AND FEATURES WITHOUT NOTICE. FLOORPLANS, ELEVATIONS, ROOM SIZES, DECKS, AND SQUARE FOOTAGES ARE APPROXIMATE AND MAY VARY FROM THE ACTUAL BUILT HOME. FLOORPLANS MAY BE ORIENTED DIFFERENTLY THAN DISPLAYED, FURNITURE AND DECOR ITEMS ARE SHOWN AS AN EXAMPLE ONLY AND ARE NOT INCLUDED. REFER TO THE DISCLOSURE STATEMENT FOR SPECIFIC DETAILS. THIS IS NOT AN OFFERING FOR SALE. ANY SUCH OFFERING CAN ONLY BE MADE WITH THE APPLICABLE DISCLOSURE STATEMENT AND AGREEMENT OF PURCHASE AND SALES AND MARKETING BY NU STREAM REALTY INC. WWW.LAUREL32.COM E.&O.E.



LAUREL32